



GeoISE: The Geographic Intelligent Search Engine

Bridges the gap between traditional text searching and powerful geographic searching.

What if you could quickly and efficiently correlate documents, drawings, sketches and procedures contained in Documentum with geographic locations on a map? GeoISE, powered by MetaCarta, combines powerful geographic search with traditional text/keyword search so information in a document management system can be effectively mapped, categorized and displayed using geographic parameters on maps, GIS systems and virtually any spatial display.

This geographically-enabled content management system allows easy access to all levels of document control, ensuring that all mission-critical functions have the required information to perform work rapidly and safely. GeoISE enables utilities, telecommunication, and municipalities to access the reference documentation for any location.

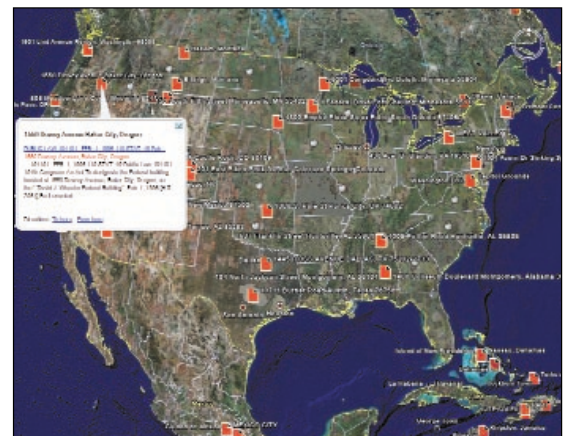
Ideal for the mobile workforce

Increasingly required to access information about their electric, gas, or water distribution network, utilities are being challenged to bring together traditional document management and geographic information systems (GIS). Geographically-enabled content management systems can positively impact each of these areas, allowing easy access to different heritages of document control, forms, procedures, design drawings, maintenance information, systems, and workflows. By allowing all relevant information at a particular address or location to be rapidly retrieved and displayed on a map, the mobile workforce can view the critical information for in-situ configurations, safety requirements, and historical records, spending less time searching for

information and more time getting the work done fast and correctly.

Benefits you can expect

- Access relevant documents for any location (address, block, line, etc.)
- Improved control of documents, drawings and specifications
- Easy and quick access to modify documents and drawings to reflect field changes
- Enhanced outage management support and emergency response information
- Improved information and content exchange between mobile work force and home office



Users can pinpoint information based on geographic areas on a map and view the results

- Geographic based search into Documentum, other document management systems, websites, portals, etc.
- Display of the number of documents found at a single location
- Viewing of documents and drawings on a map
- Filter information based on geographic areas of interest
- Full document management security and permission adherence

How does GeoISE work?

GeoISE processes the documents by ingesting their full content, then parses and tags them using natural language processing techniques to identify the text strings that refer to geographic places. Next, it identifies the precise location reference and creates a tag with latitude and longitude coordinates. Lastly, it indexes them, after which they become available for searching. When you run a search, GeoISE finds the documents that pertain to your query and ranks them by relevance.

Documents are pulled from:

- Company Internal Shared Drives
- Document Management Systems
Documentum, Livelink, Sharepoint
- Web Content
www, Internal Web, Portals
- Structured Databases
- RDBMS, eSearch, OpenWorks (WOW), GeoFrame

We make technology work.

About Trinity Technologies

Trinity Technologies is a leading business consulting and technology services company specializing in the configuration, customization and implementation of the Documentum content management system. We provide valuable solutions for the process, power, energy, chemical, financial, legal, and pharmaceutical industries. Our primary goal is to assist your company in deriving the ultimate profit from investments in information systems.

Call Trinity Technologies at 781-235-2223 and visit www.trinitytechnologies.com to learn more about our solutions.



- by telephone at 781-235-2223
- by FAX at 781-235-5752
- by mail at Trinity Technologies Corp., 36 Washington Street, Suite 120, Wellesley Hills, MA 02481
- by e-mail at info@trinitytechnologies.com
- on the Web at www.trinitytechnologies.com